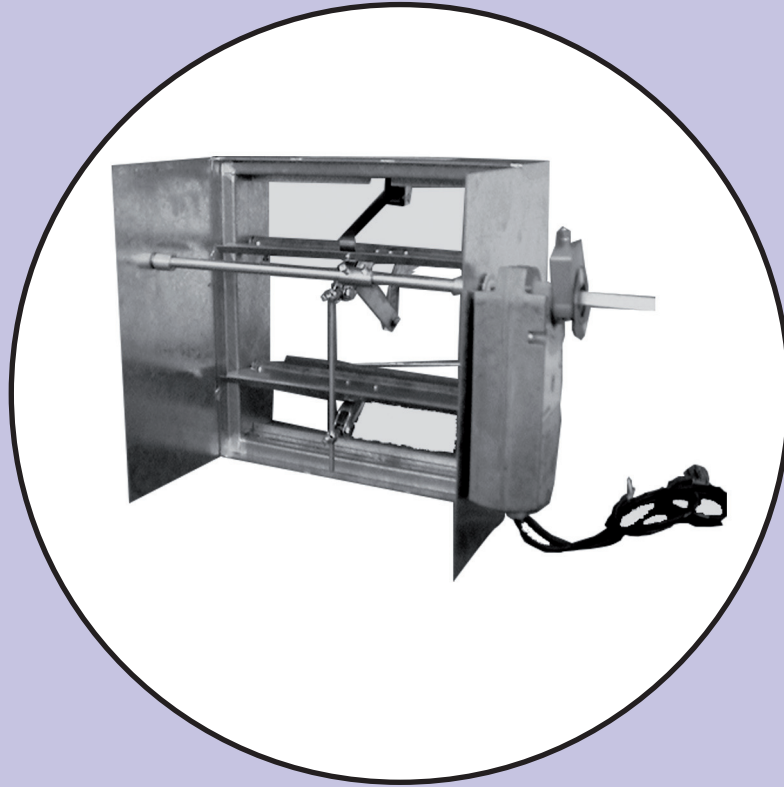


جي جي سي

G G C

شركة الخليج لفتحات التكييف المركزي

GULF GRILLES CO.

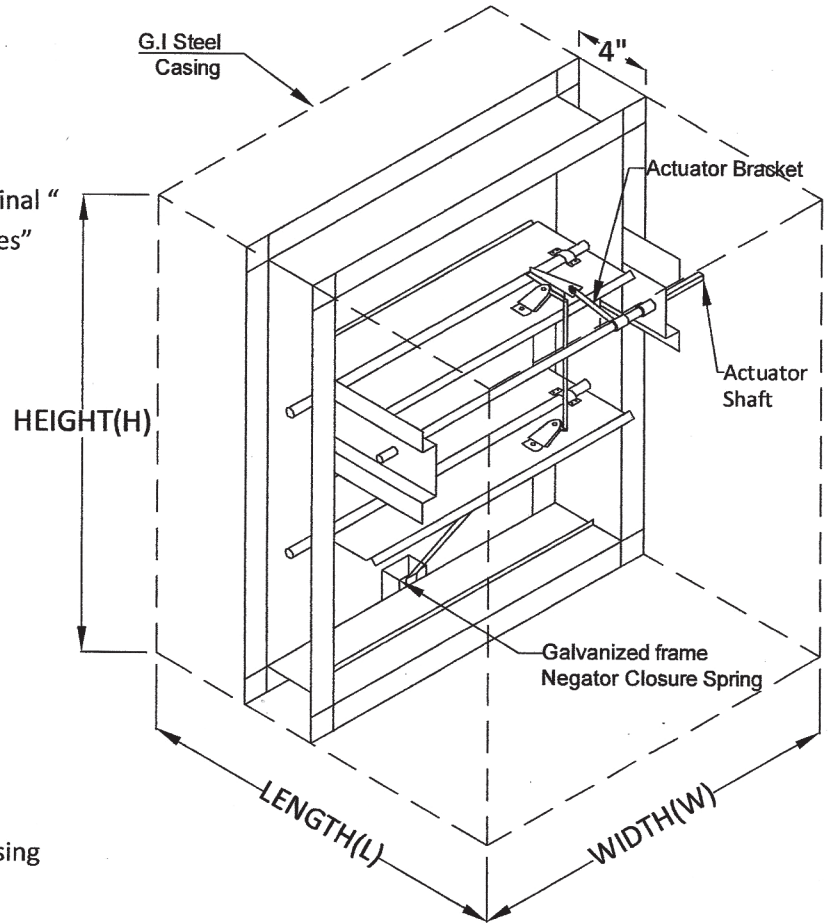


FIRE & SMOKE  
DAMPERS

B03  
FIRE & SMOKE  
DAMPERS

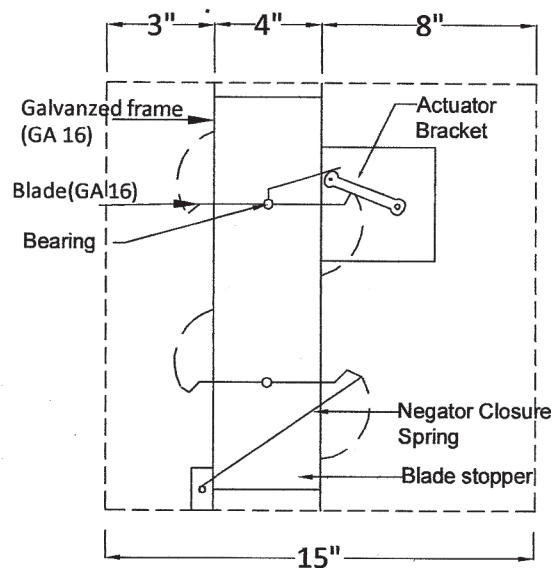
### STANDARD CONSTRUCTION

- Frame : 4"x1.5 mm galvanized, flanged frame
- Blades : 1.5 mm galvanized steel, reinforced with 3 longitudinal "structurally designed Vees"
- Axles : ½" Ø plated steel
- Bushings : Bronze-self oiling
- Linkage : Exposed in frame
- Mounting : vertical or Horizontal
- Actuator : Spring return two position 24 or 220 VAC
- Finish : Mill Galvanized
- Casing : 1.5 mm G.I. Steel plain casing



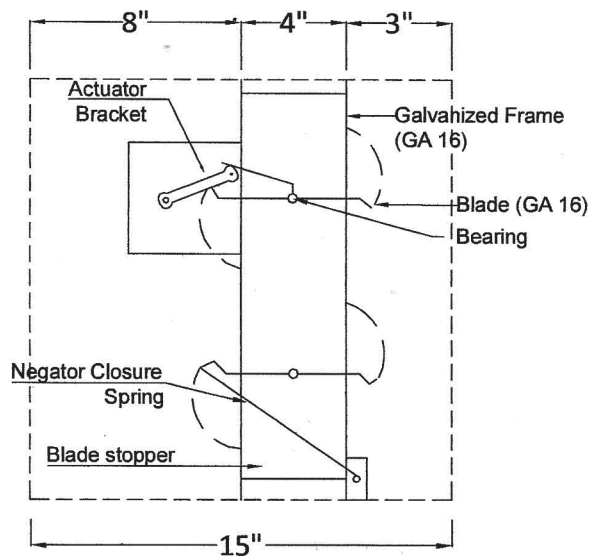
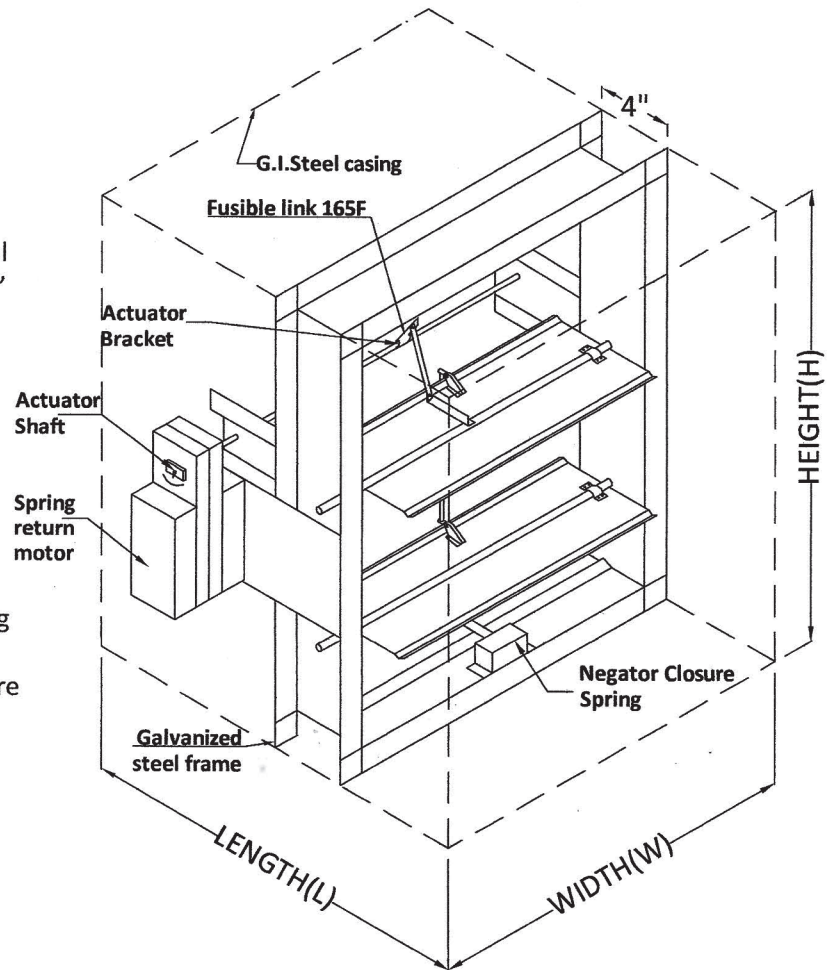
### • Casing options at both ends

1. S- & -Drive-C-clip
2. G.I. Steel Angle  
Size:30x30x3 mm  
Black colored
3. Duct bended flange in casing 5 mm depth or as required



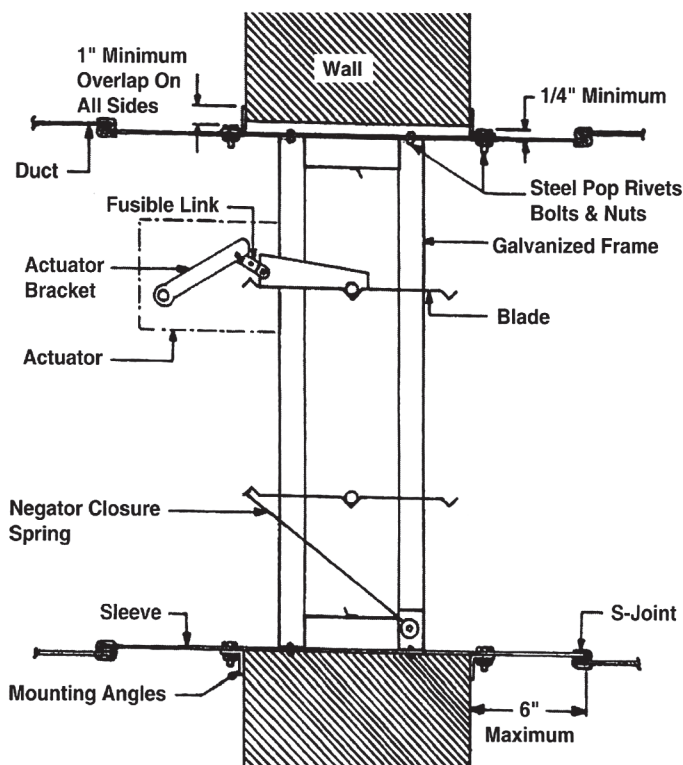
### STANDARD CONSTRUCTION:

- Frame : 4"x1.5mm galvanized, flanged frame
- Blades : 1.5 mm galvanized steel, reinforced with 3 longitudinal "structurally designed Vees"
- Axles : ½" Ø plated steel
- Bushings : Bronze-self oiling
- Linkage : Exposed in frame
- Fusible Link: UL Listed. Standard for fusing Temperature of 165°F. Other fusing temperatures are available on request
- Mounting : Vertical or Horizontal
- Actuator : Spring return two position 24 or 220 VAC
- Fire rating : 3 hours
- Finish : Mill Galvanized
- Casing : 1.5 mm G.I. Steel plain casing
- Casing options at both ends
  1. S- & -Drive-C-clip
  2. G.I. Steel Angle  
Size:30x30x3 mm  
Black colored
  3. Duct bended flange in casing 5 mm depth or as required



## INSTALLATION DETAILS

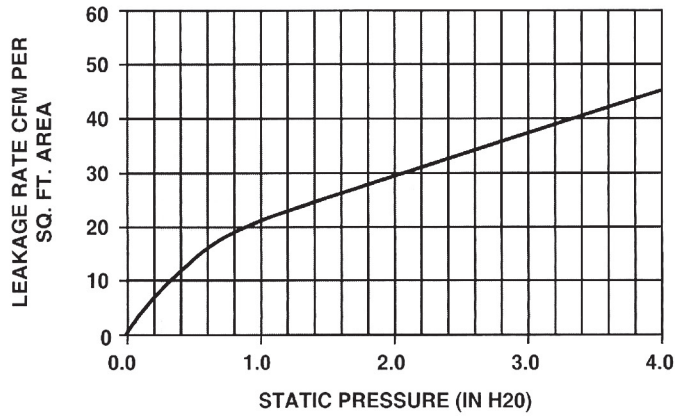
Models : FD30-S & FD30-FS



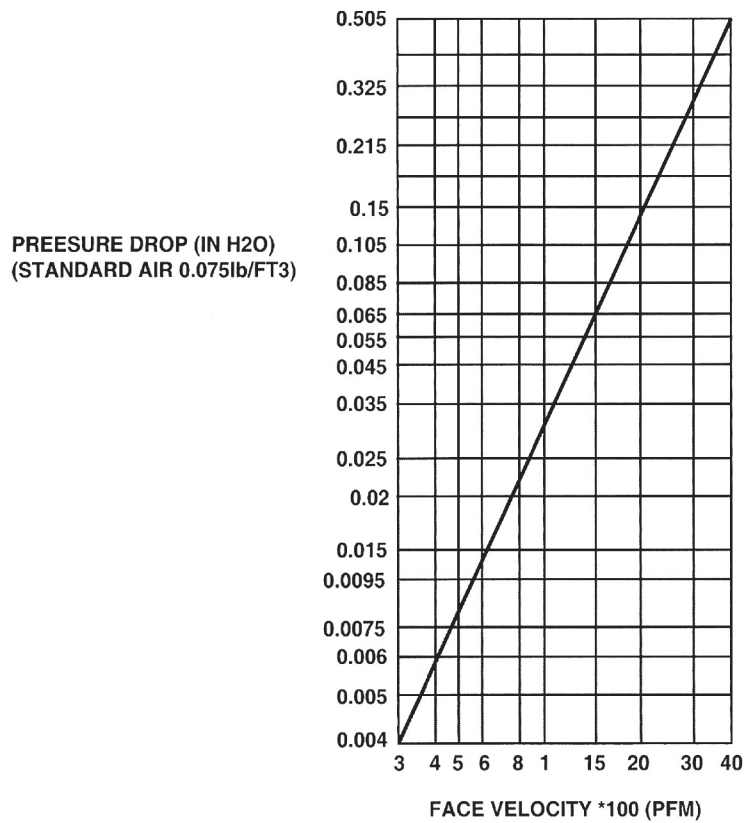
1. Minimum clearance of 1/4" shall be provided between the sleeve and wall or floor openings.
2. Connect duct to the sleeve by any one of SMACNA approved joints. The following duct connections are used: Plain S-Slip, hemmed S-Slip, standing S-Slip, reinforced standing S-Slip, inside Slip joint, and double S-Slip joint. Don't screw or rivet the joints.
3. Mounting angles shall be 1 1/2" x 1 1/2" x 14 gauge minimum and fastened with No. 10 bolts or screws, 3/16" Diameter steel rivets or 1/2" long tack welds. Space fasteners 8" on center.
4. Damper sleeve shall not extend more than 6" beyond the fire wall or partition and not more than 9" on the actuator side.

PERFORMANCE DATA  
SMOKE DAMPER & FIRE / SMOKE DAMPER

LEAKAGE CHART



PRESSURE DROP CHART



Pressre Drop v. Face Velocity with Damper in Full Open Position.

## SIEMENS 2 POSITION SPRING RETURN ACTUATORS (COMBINATION FIRE & SMOKE DAMPER ACTUATORS)

### GMA 126.1E

- With self-centering shaft adapter for shaft dia.6.4...20.5 mm, square 6.5...13 mm, min.shaft length 20 mm
- With position indication and adjustable mechanical limit stop
- Manual override
- With housing made of die-cast aluminum and 0.9 mm connecting cable.

Attribute	Value
Torque	7.00 Nm
Air damper Area	1.50 m <sup>2</sup>
Angular rotation	90°
Positioning time	Opening with motor:90s, closing with spring: 15 s
Degree of protection	IP54
Dimensions(WxHxD)	81x192x63 mm
Operating Voltage	DC 24 V
Power Consumption	5 VA,3.5 W
Positioning signal	2-position
Rated Output	5.00 VA
Auxiliary switch	2



### GMA 321.1E & GMA 326.1E

- With self-centering shaft adapter for shaft dia.6.4...20.5 mm, square 6.5...13 mm, min.shaft length 20 mm
- With position indication and adjustable mechanical limit stop
- Manual override
- With housing made of die-cast aluminum and 0.9 mm connecting cable.

Attribute	Value
Torque	7.00 Nm
Air damper Area	1.50 m <sup>2</sup>
Angular rotation	90°
Positioning time	Opening with motor:90s, closing with spring: 15 s
Degree of protection	IP54
Dimensions(WxHxD)	81x192x63 mm
Operating Voltage	AC 230 V
Power Consumption	7.5 VA
Positioning signal	2-position
Rated Output	7.00 VA
Auxiliary switch	0 (GMA 321.1E), 2(GMA 326.1E)



## SIEMENS 2 POSITION SPRING RETURN ACTUATORS (COMBINATION FIRE & SMOKE DAMPER ACTUATORS)

### GCA 126.1E

- With self-centering shaft adapter for shaft dia. 8...25.6 mm, square 6...18 mm, min.shaft length 20 mm
- With position indication and adjustable mechanical limit stop
- Manual override
- With housing made of die-cast aluminum and 0.9 mm connecting cable.

Attribute	Value
Torque	18.00 Nm
Air damper Area	3 m <sup>2</sup>
Angular rotation	90 °
Positioning time	Opening with motor:90s, closing with spring: 15 s
Degree of protection	IP54
Dimensions(WxHxD)	100x300x75 mm
Operating Voltage	DC 24 V
Power Consumption	7 VA / 5 W
Positioning signal	2-position
Rated Output	7.00 VA
Auxiliary switch	2



### GCA 321.1E/GCA 326.1E

- With self-centering shaft adapter for shaft dia. 8...25.6 mm, square 6...18 mm, min.shaft length 20 mm
- With position indication and adjustable mechanical limit stop
- Manual override
- With housing made of die-cast aluminum and 0.9 mm connecting cable.

Attribute	Value
Torque	18.00 Nm
Air damper Area	3 m <sup>2</sup>
Angular rotation	90 °
Positioning time	Opening with motor:90s, closing with spring: 15 s
Degree of protection	IP54
Dimensions(WxHxD)	100x300x75 mm
Operating Voltage	AC 230 V
Power Consumption	8 VA / 6 W
Positioning signal	2-position
Rated Output	8.00 VA
Auxiliary switch	0(GCA 321.1E),2(GCA 326.1E)

